



Explorer's Positioning System™

Positioning and Perimeter System

Ages 4 and Up
11324

Important: Please save this instruction sheet. It contains valuable product information.

Your Explorer's Positioning System lets you keep track of pests, pets and parents—indoors and out!

To Set Up Sensors

1. Unwind the antenna on each sensor and straighten upwards.
2. Slide each sensor's switch to the "ON" position (Fig. 1).
3. Place each of the sensors in a hiding place anywhere up to 75 feet (22m) from the main unit.
4. This system includes both a **light** sensor and a **motion** sensor
 - Be sure to set the light sensor's lens facing away from any obstructions (walls, books etc).
 - The motion sensor is very sensitive! Slight vibrations will set it off.

To Track the Action!

1. Flip open the **Map Cover**.
2. Slide the **On / Off Switch** to **mute** or **audio** position (Fig. 2). The **Map Grid** will illuminate.
3. Be sure the antenna on the hand held unit is as straight as possible.
4. Use the **Dry-erase Marker** to draw an area map on the grid showing where the sensors are placed.

Tip: Draw a line from each sensor's LED to its position on the map.

5. In **Audio** mode, when someone trips a sensor the base station will beep and that sensor's LED will flash.
6. In **Mute** mode, only the sensor's LED will flash.
7. To stop the LEDs flashing, press the **Reset Button**.

Battery Information:

Requires 6 AAA (LR3) batteries: 2 for **each sensor** and 2 for the **receiver** (batteries not included).

Battery Safety:

- Only adults should install and replace batteries
- Do not use rechargeable batteries.
- Do not try to recharge non-rechargeable batteries.
- Insert batteries correctly—match positive and negative signs.
- Do not place anything across the battery terminals.
- Do not mix alkaline, standard (carbon-zinc), or rechargeable (nickel-cadmium) batteries.
- Do not mix old and new batteries.
- Only use the batteries specified above.
- Remove dead or weak batteries.
- Dispose of batteries safely. Recycle them where possible.
- Do not dispose of batteries in a fire. They may explode!

Adults! To Install Batteries In The Base Station

1. Locate the battery compartment on the bottom of the base station. Use a small Phillips head screwdriver to loosen the screw, and unclip the battery cover.
2. Place batteries in compartment as shown (Fig. 3).
3. Replace battery cover and tighten screw.

Adults! To Install Batteries In Each Sensor

1. Locate the screw on the base of the sensor. Use a small Phillips head screwdriver to loosen the screw, and unclip the battery cover.
2. Place batteries in compartment as shown (Fig. 4).
3. Replace battery cover and tighten screw.
4. Repeat for each sensor.

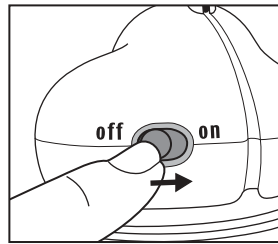
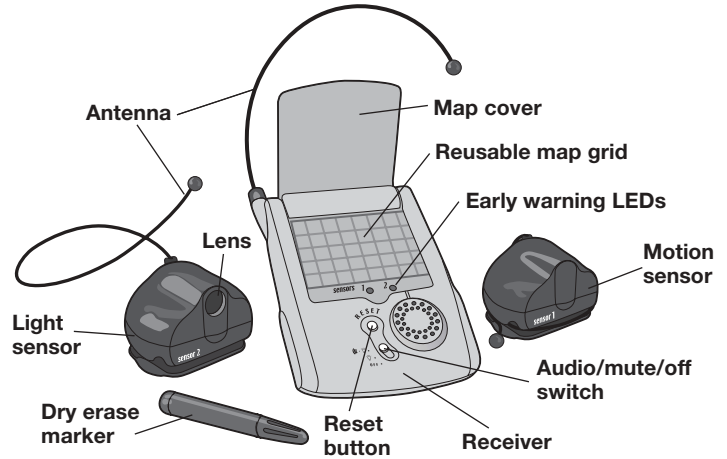


Fig. 1

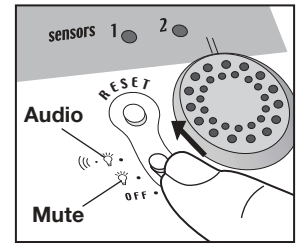


Fig. 2

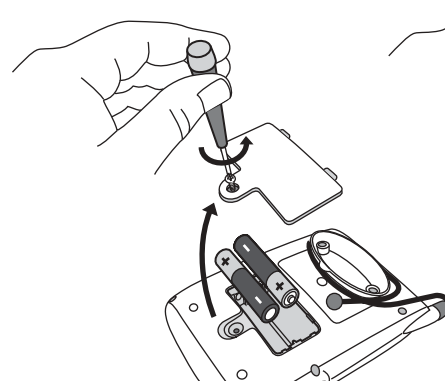


Fig. 3

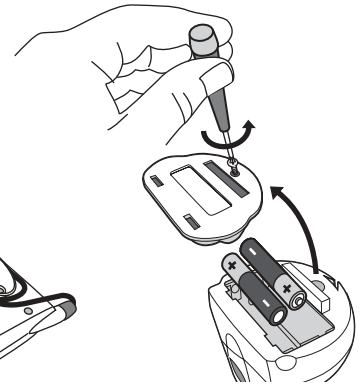


Fig. 4

Leave No Trace! When you are done exploring:

1. Slide all switches to the off position
2. Collect each sensor and wrap the antenna around its body.
3. Wipe off the map grid with a clean dry paper towel.

Troubleshooting

- Before setting the light sensor, move your hand in front of the lens. If the LED on the base station does not flash, check the antenna and/or batteries.
- Check that nothing is blocking the sensor lens. The sensor will only detect movement five feet directly in front of the lens.
- If the motion sensor does not respond to movement, check the antenna and/or batteries.
- Make sure that the antennas are set as straight as possible.

WARNING: Changes or modifications to this toy that are not expressly approved by Wild Planet Toys, Inc. could void the user's



EXPLORER'S POSITIONING SYSTEM 11324-4000-G1 PR 06/04

IF YOU HAVE ANY QUESTIONS, PLEASE CONTACT US AT
1-800-247-6570
WWW.WILDPLANET.COM
©2003 Wild Planet Toys, Inc.
P.O. Box 194087 San Francisco, CA 94119-4087



WARNING:

**CHOKING HAZARD: Small Parts.
Not for Children Under 3 Years.**

FCC ID: N3EPPSYS11324TX1
FCC ID: N3EPPSYS11324TX2
This device complies with Part 15 of the FCC rules. Operation is subject to the following two conditions: (1) This device may not cause harmful interference and (2) This device must accept any interference received, including interference that may cause undesired operation.

Operation is subject to the following two conditions: (1) this device may not cause interference, and (2) this device must accept any interference, including interference that may cause undesired operation of the device.

49.860MHz
53.0 dBu V/m at 3m