

**Important: Please save this instruction sheet. It contains valuable product information.**

**SET THE CLOCK**

1. Install two AAA (LR03) batteries. See below. The display will show 00:00.
2. Insert the **CARD-KEY** hole side first (Fig. 1). The card-key must be inserted in the **CARD-KEY SLOT** in the **ALARM UNIT** to set the time.
3. Press the **HOURLY TIME SET BUTTON** (Fig. 2) until the hour numbers on the clock blink; then scroll to the current hour. **NOTE:** Just like with real spy gear, this alarm operates on 24-hour military time: for example; 6:00PM reads as 18:00, 10:00PM reads as 22:00 etc.
4. Press the **MINUTE TIME SET BUTTON** (Fig. 2) until the minute numbers on the clock blink; then scroll to the current minute.
5. Remove the card to start the clock running.

**Troubleshooting:** If you are having difficulty setting the time after new batteries are installed, use a pen tip or a paper clip to press the **RESET BUTTON** near the battery door. (Fig. 5)

**SET THE TRAP**

1. Pick a location that opens, like a door, window or drawer where the alarm unit and **SENSOR** can line up as shown in Fig 2. The 2 pieces should be no more than .25" (6.3mm) apart to set the alarm.
2. Peel the paper backing off the **HOOK AND LOOP TAPE** (Fig. 3) and press the alarm unit to the location where you want to install the alarm.
3. Repeat steps 2 & 3 with the sensor and hook and loop tape.
4. Close the secured area and the alarm is now set. The **ALARM ON SYMBOL (( ))** on the **LCD DISPLAY** will light up (Fig. 4).
5. You should see the **ALARM SOUND SYMBOL ●** (Fig. 4) in the lower left corner of the LCD display. This symbol means alarm sound is on. To turn the alarm sound off, press the **ALARM SILENCER BUTTON** (Fig. 2).
6. When an intruder enters, the alarm will sound and the time will be recorded. **NOTE:** When someone sets off the alarm after the door is closed, there will be a flashing symbol (( )) that will indicate that someone has been in your room. Once the timestamp has been checked the symbol (( )) will stop flashing. Up to 4 separate entry times can be recorded.

**TIPS**

- The **ARROWS** on the separate pieces must point at each other to set the alarm (Fig. 2).
- To keep your Alarm Kit safe from damage, make sure that your door will not close on the alarm unit or sensor.
- You can install the alarm on doors that face the opposite direction. The LCD display will appear upside-down. To reverse the LCD display, press and hold the **TIMESTAMP BUTTON** and the **HOURLY TIME SET BUTTON**. To flip the screen back again, simply repeat this step.
- For maximum security, extra pieces of hook and loop tape are included. You can set up two traps and easily move your Alarm Kit from one location to the other.

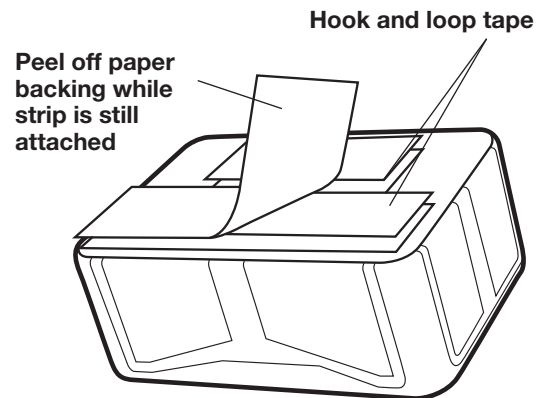
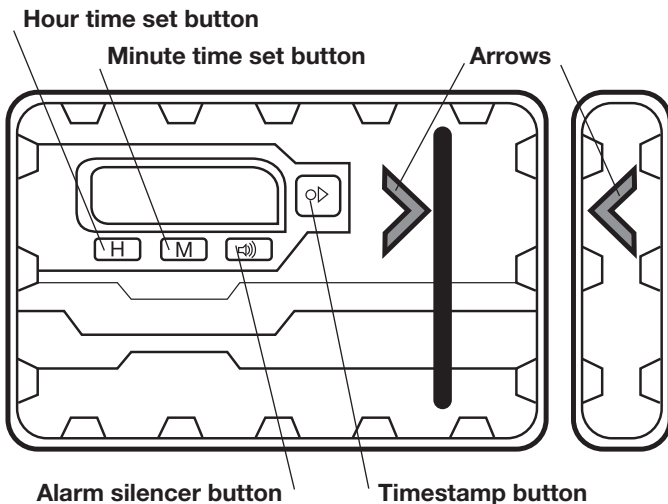
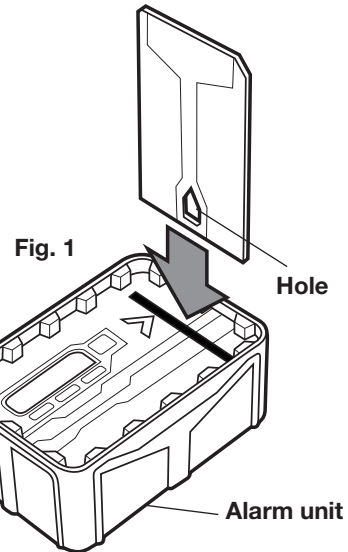
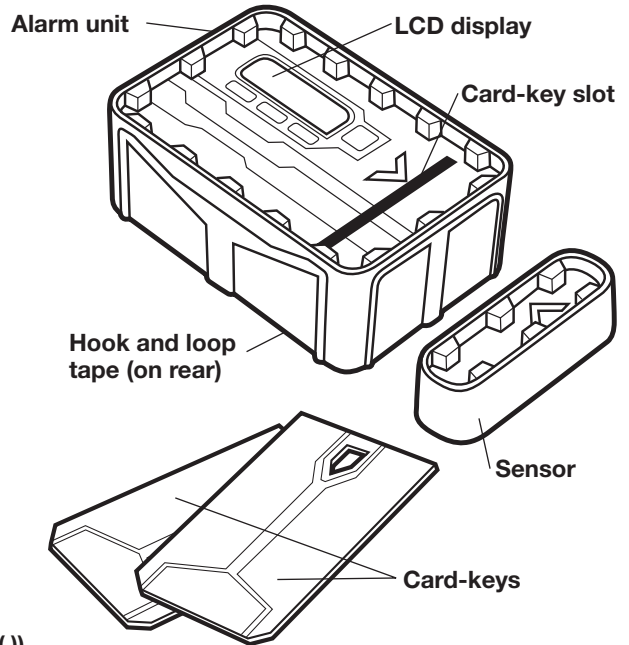


Fig. 3

Fig. 2

## READING THE TIMESTAMP

1. To see the times when someone entered the secured area, put your card-key in the slot.
  2. You will see A1 in top left corner and a time across the LCD display; this is the most recent time someone entered the secured area (Fig 4.)
  3. The alarm records up to four times people tried to access the secured area. To reveal more times push the timestamp button. It will show A2 (2nd most recent time someone entered), A3 (3rd most recent time someone entered), A4 (4th most recent time someone entered.)
  4. After you have reviewed all the entries, you can clear out all the timestamps and start over. To clear timestamps, press and hold the timestamp button and the minute time set button.
- Then A1 will show 00:00, and all your timestamps will be clear.
5. To exit the timestamp mode, simply remove your card-key.
- NOTE:** You do not need to clear out the timestamps. The Alarm Kit will always keep track of the four most recent intrusions.

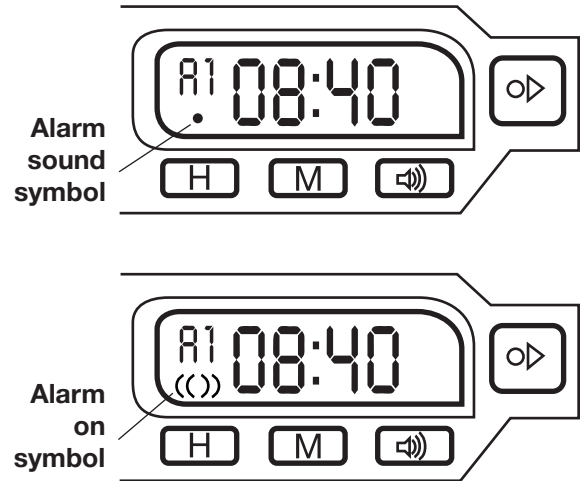


Fig. 4

## ENTERING THE SECURED AREA

When you want to access the alarmed location without setting off the alarm or timestamp, insert your card-key and open the door. The alarm will not sound and time will not be stamped.

## BATTERY INFORMATION

The Alarm Kit requires two AAA (LR03) batteries, not included.

## ATTENTION ADULTS: TO REPLACE BATTERIES

1. Use a small Phillips head screwdriver to loosen the screw on the battery compartment. The screw will not fall out.
2. Open battery cover. Remove exhausted batteries.
3. Place new batteries in compartment as shown (Fig. 5).
4. Replace the battery cover and tighten screw.

**NOTE:** Alarm kit may experience memory loss if subjected to an electrostatic discharge. If this occurs, reset the Alarm kit.

## BATTERY SAFETY INFORMATION

- Only adults should install and replace batteries.
- Do not recharge non-rechargeable batteries.
- Remove dead or exhausted batteries.
- Insert batteries correctly. Match positive and negative signs.
- The supply terminals are not to be short-circuited.
- Do not use rechargeable batteries.
- Do not mix alkaline, standard (carbon-zinc), or rechargeable (nickel-cadmium) batteries.
- Do not mix old and new batteries.
- Only the batteries of the same or equivalent type recommended to be used.
- Do not dispose batteries in a fire; they may explode.
- Dispose of batteries safely.

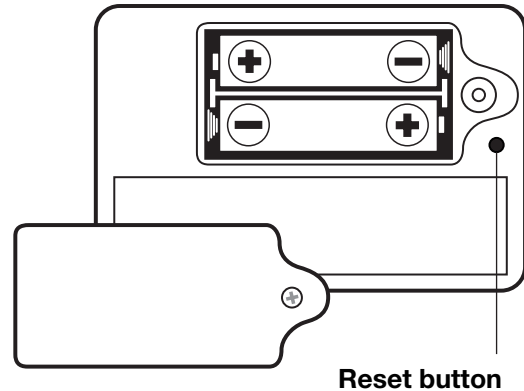


Fig. 5

## FCC INFORMATION

**Caution:** Changes or modifications to this equipment not expressly approved by the party responsible for compliance could void the user's authority to operate the equipment.

**NOTE:** This equipment has been tested and found to comply with the limits for a Class B digital device, pursuant to Part 15 of the FCC Rules. These limits are designed to provide reasonable protection against harmful interference in a residential installation. This equipment generates, uses, and can radiate radio frequency energy and, if not installed and used in accordance with the instructions, may cause harmful interference to radio communications. However, there is no guarantee that interference will not occur in a particular installation. If this equipment does cause harmful interference to radio or television reception, which can be determined by turning the equipment off and on, the user is encouraged to try to correct the interference by one or more of the following measures:

- Reorient or relocate the receiving antenna.
- Increase the separation between the equipment and receiver.
- Connect the equipment into an outlet on a circuit different from that to which the receiver is connected.
- Consult the dealer or an experienced radio TV technician for help.



ALARM KIT 70134-4000 PR 04/06

IF YOU HAVE ANY QUESTIONS, PLEASE CONTACT US AT  
1-800-247-6570  
www.wildplanet.com/help  
©2006 Wild Planet Toys, Inc.  
P.O. Box 194087 San Francisco, CA 94119-4087