



Digital Spy Camera™

Digital Camera Attached to Sunglasses

Ages 8 and up
70137
Requires 1 AAA (LR03)
battery, not included.

Important: Please save this instruction sheet. It contains valuable product information.

SETTING UP YOUR DIGITAL SPY CAMERA

- Hook the **BOTTOM CLIPS** of the **CAMERA** under the **RIGHT ARM** of the **SUNGLASSES** where the **MOUNTING POINTS** are. Then snap the **TOP CLIPS** over the top of the arm. (Fig. 1)
- Install battery. See instructions on back.
- Swing back of camera out so it faces forward. You are ready to shoot!

TAKING PICTURES WITH YOUR DIGITAL SPY CAMERA

- On the hand-held remote, make sure the **HIBERNATION MODE BUTTON** is in the **DOWN** position. (Fig. 4)
- Turn on the camera by pressing and holding the **POWER/MODE BUTTON** until you hear a chime as the camera powers up.
- Press the hand-held **REMOTE SHUTTER BUTTON** to take a picture. The camera will beep every time you take a picture.
- The camera will automatically shut off after 30 seconds to save battery life. It will beep when it shuts off. If the camera doesn't beep when you take a picture, it has shut off. Press and hold the power/mode button until it powers up again.
- The camera counts up from 01 to 18 to show you how many pictures you have taken.

DELETING PICTURES FROM YOUR DIGITAL SPY CAMERA

- If you don't like a picture that you've taken, you can delete the last picture from the camera.
- With the camera powered up, press the power/mode button to enter "delete mode." The **LCD SCREEN** will say "CL" (for clear last). (If the camera is off, press 2 times—once to turn the camera on and once to enter "delete mode.")
- Press the hand-held remote shutter button once to begin deleting.
- Press the hand-held remote shutter button a second time to confirm you want to delete the last picture you took. The LCD Screen number will reduce by 1 when you do this.
- You may keep deleting pictures until the camera is empty.

INSTALLING THE SOFTWARE

- Insert the **SOFTWARE CD-ROM** and follow the directions. You must do this first, before you hook up the camera, or you will not be able to download. You will only need to install this software once, but save the CD in case you ever need to reinstall it. **If you lose the CD or need software in a language not on the CD, go to www.spygear.net/software to download software in your specific language.**

DOWNLOADING PICTURES TO A COMPUTER

- Connect the camera to the computer using the **USB PORT** on the camera and the **USB CORD**. **MAKE SURE YOU DO THIS BEFORE YOU OPEN THE SOFTWARE.**
- Click on the "Spy Gear Digital Spy Camera" icon on the desktop to launch the program. It can also be launched from the "Start" menu: Start > Programs > Spy Gear Digital Spy Camera > Spy Gear Digital Spy Camera.
- Click "Transfer Photos" and the photos will appear in the windows on the screen. (Fig. 2)
- Select the pictures you want to download or click "Save All." A dialog box will appear to ask you how you want to name the files.
- The computer will automatically save photos to: C:/My Documents/My Pictures/Spy Gear Photos. You may use the dialog box that appears to save the photos to another folder.
- Once you have saved all your photos, click "Erase All" to empty the camera. Now you're ready for your next spy mission.
- To close out of the Spy Gear Digital Spy Camera software, click "Exit Program."
- Make sure you unplug your Digital Spy Camera from the computer when you are done downloading pictures to save battery life. If you want to leave the camera plugged into the computer, make sure to set it to Hibernation Mode (see next section).

NOTE: While the camera is plugged into the computer, you can take more pictures. The Live Video Feed window on the computer screen shows you what the camera sees. To capture this image, click "Take Picture." A dialog box will appear to ask you to save the file.

SYSTEM REQUIREMENTS:
Windows XP CD-ROM drive
Pentium III or higher 16-bit color display or higher
64MB RAM or higher Available USB port
20MB free hard drive space

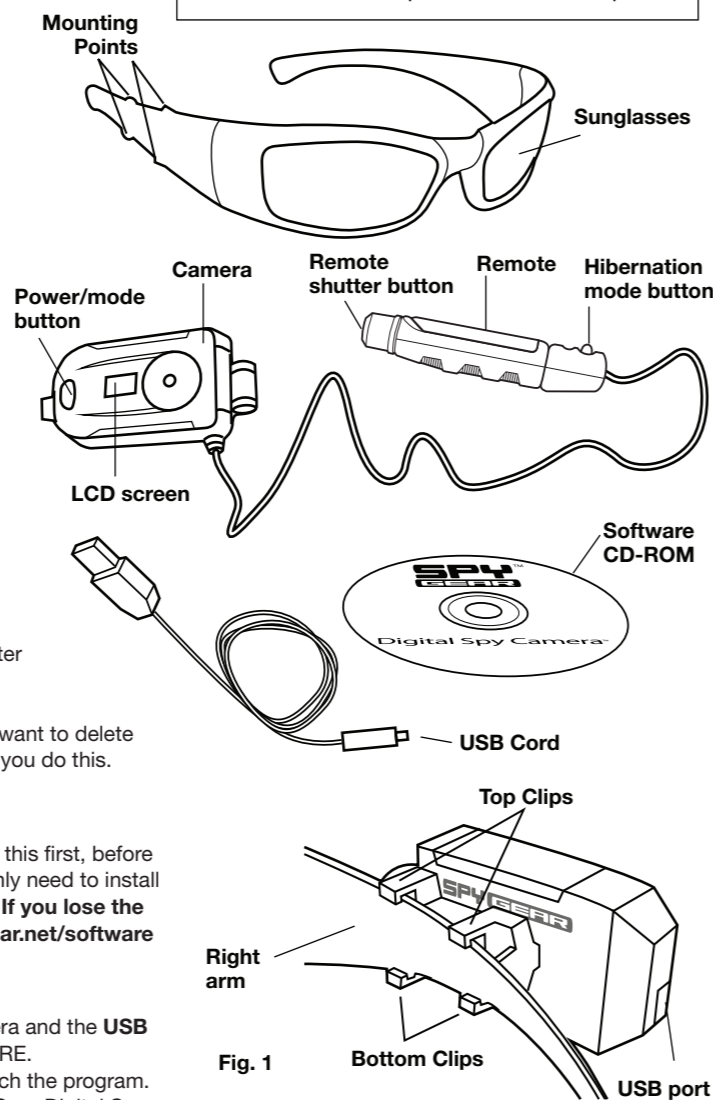


Fig. 1

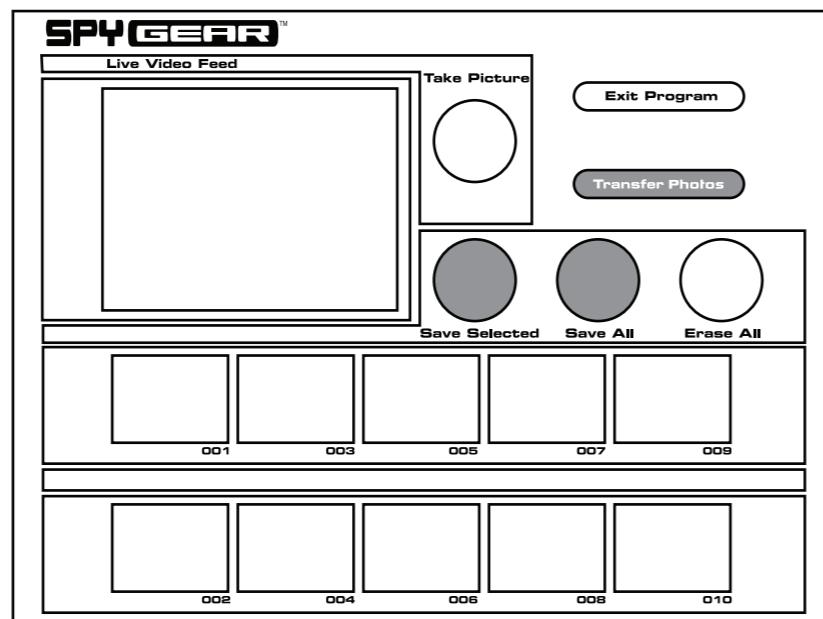


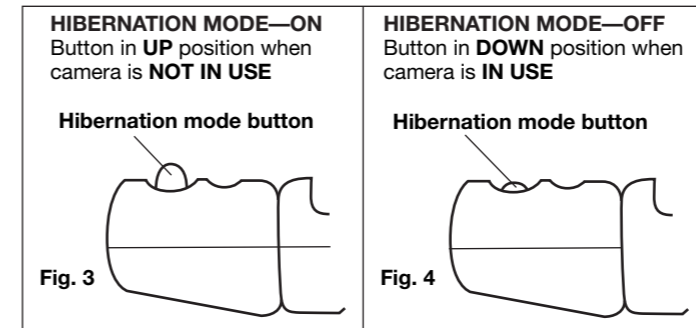
Fig. 2

STORING YOUR DIGITAL SPY CAMERA IN HIBERNATION MODE

- When you put your Digital Spy Camera away for a day or more, make sure you turn it to **HIBERNATION MODE**. (Fig. 3) It is important to do this because it preserves the battery.
- To turn the camera to hibernation mode, release the hibernation mode button by pressing it down quickly so it pops into the **UP** position as shown in Fig. 3.
- To wake the camera up out of hibernation mode, simply press the button into the **DOWN** position. (Fig. 4)

WARNING

- If you set the camera to hibernation mode before you download your photos, **YOU WILL LOSE ALL THE PHOTOS ON THE CAMERA**. Make sure you download the photos before you set the camera to hibernation mode.
- If you forget to set the hibernation mode button into the **UP** position when you store the camera, your battery will last for only a short period.



TIPS AND TRICKS:

- To take the clearest pictures, be very still when shooting with your Digital Spy Camera.
- The Digital Spy Camera doesn't have a flash, so you can take photos in secret. For the best pictures, shoot in well-lit areas.
- Digital Spy Camera can take photos in any position.
- If a picture is key to your spy mission, take it a few times and from different angles to make sure you get it right.
- Make sure you hear a beep every time you take a picture. If the camera does not beep, you may need to turn on the camera or put in new batteries.
- The camera automatically focuses on objects 5 feet away or more. Stand at least this far away and point the camera straight at your subject to take a good picture!
- To download to the computer, make sure you plug the camera into the computer BEFORE you open the software program. The software will not open if the camera is not plugged into the computer.

NOTE: If you have any problems with the software installation or function, please go to the help section of our Web site: www.wildplanet.com/help.

BATTERY INFORMATION

Note: Removing battery will cause the loss of any pictures in the camera. Make sure you download and save your pictures first.

BATTERY SAFETY INFORMATION

- Only adults should install and replace batteries.
- Do not recharge non-rechargeable batteries.
- Remove dead or exhausted batteries.
- Insert batteries correctly. Match positive and negative signs.
- The supply terminals are not to be short circuited.
- Do not use rechargeable batteries.
- Do not mix alkaline, standard (carbon-zinc), or rechargeable (nickel-cadmium) batteries.
- Do not mix old and new batteries.
- Only the batteries of the same or equivalent type recommended to be used.
- Do not dispose of batteries in a fire; they may explode.
- Dispose of batteries safely.



DIGITAL SPY CAMERA 70137-4000-G1 PR 10/06
IF YOU HAVE ANY QUESTIONS, PLEASE CONTACT US AT
1-800-247-6570
WWW.WILDPLANET.COM/HELP
©2006 Wild Planet Entertainment, Inc.
P.O. Box 194087 San Francisco, CA 94119-4087

© 2006 Wild Planet Entertainment, Inc., San Francisco, CA 94104, USA.
All rights reserved. **PRINTED IN CHINA.**

ATTENTION ADULTS: TO REPLACE BATTERIES

- Use a small Phillips head screwdriver to loosen the screw on the battery compartment. The screw will not fall out.
- Open battery cover. Remove exhausted battery.
- Place new battery in compartment as shown (Fig. 5).
- Replace the battery cover and tighten screw.

NOTE: Battery failure will cause the loss of any pictures in the camera. Always make sure that you download your pictures right away!

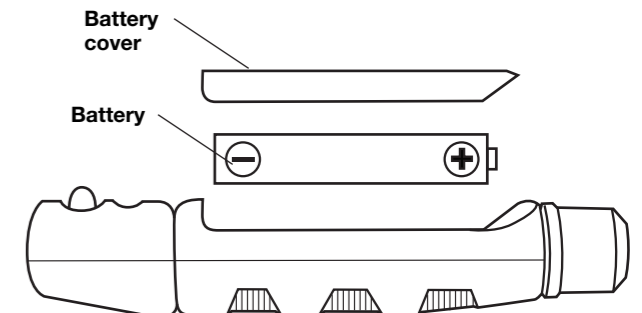


Fig. 5

If you've installed the software, but get an error message saying that your PC can't find the camera, don't worry! Follow these steps:

- From the desktop, right-click on "My Computer," select "Properties," then click "Hardware" and "Device Manager."
- Find the item that has a yellow question mark next to it. It will probably be "Other Devices." Double-click "Other Devices." The item "USB Camera" should have an exclamation point in a yellow circle next to it.
- Right-click "USB Camera."
- Click "Update Driver." The "Hardware Update Wizard" will open.
- Check "No, not this time" and click Next.
- Check "Install from a list or specific location (Advanced)" and click Next.
- Uncheck the box "Search removable media (floppy, CD-Rom...)."
- Check the box "Include this location in the search:".
- Click Browse, then click on the Local Disk "(C:)" folder. Next click the "Program Files" folder. Next click the "Common Files" folder, then click the "SNDP106" folder. Click OK. Click Next. The Hardware Wizard will install the Digital Spy Camera driver.
- If successful, the Hardware Wizard will say, "The wizard has finished installing the software for Digital Spy Camera."

This device complies with Part 15 of the FCC Rules. Operation is subject to the following two conditions: (1) This device may not cause harmful interference, and (2) This device must accept any interference received, including interference that may cause undesired operation.

WARNING: Changes or modifications to this equipment not expressly approved by the party responsible for compliance could void the user's authority to operate the equipment.

NOTE: This equipment has been tested and found to comply with the limits for a Class B digital device, pursuant to Part 15 of the FCC Rules. These limits are designed to provide reasonable protection against harmful interference in a residential installation. This equipment generates, uses, and can radiate radio frequency energy and, if not installed and used in accordance with the instructions, may cause harmful interference to radio communications. However, there is no guarantee that interference will not occur in a particular installation. If this equipment does cause harmful interference to radio or television reception, which can be determined by turning the equipment off and on, the user is encouraged to try to correct the interference by one or more of the following measures:

- Reorient or relocate the receiving antenna.
- Increase the separation between the equipment and receiver.
- Connect the equipment into an outlet on a circuit different from that to which the receiver is connected.
- Consult the dealer or an experienced radio/ TV technician for help.