

Important: Please save this instruction sheet. It contains valuable product information.

TO ADJUST THE HEAD STRAPS (Fig. 1)

Battery pack strap: Press the catches on either side of the goggles frame and slide the main strap in or out.

Top strap: Adjust by pulling the ends of the nylon bands.

TO USE THE GOGGLES

1. Place goggles on your head and adjust for comfort. Put the **EARBUD** in your ear.
2. Slide the **MASTER POWER SWITCH** (underneath the battery pack) to the **ON** position. The **LED SPOTLIGHTS** will light up.
3. Slide the **LISTENER POD POWER SWITCH** (on the listener pod) to the **ON** position. You will hear faraway sounds. (Face the direction of the sound source for best results.)
4. Rotate the **LED SPOTLIGHTS** and **LISTENER POD** to change the angle.
Note: They will not rotate all the way around.
5. Switch power **OFF** and replace the earbud on its hook when finished using the goggles.

TO REMOVE THE LISTENER POD (Fig. 2)

Pull straight out from headpiece. To replace, snap it back in.
Note: Future gadgets, sold separately, will be available to snap in place and replace the **LISTENER**.

BATTERY SAFETY INFORMATION

- Requires 4 AAA (LR03) batteries, not included.
- Only adults should install and replace batteries.
- Do not recharge non-rechargeable batteries.
- Do not use rechargeable batteries.
- Remove dead or exhausted batteries.
- Insert batteries correctly. Match positive and negative signs.
- Do not place anything across the battery terminals.
- Only use the batteries specified above.
- Do not mix alkaline, standard (carbon-zinc), or rechargeable (nickel-cadmium) batteries.
- Do not mix old and new batteries.
- Do not dispose of batteries in a fire; they may explode.
- Dispose of batteries safely.

ATTENTION ADULTS: To Replace Batteries

The Spy Night Patrol-Listener requires 4 AAA (LR03) batteries, not included.

1. Use a Phillips head screwdriver to loosen the screws on the battery compartment.
2. Open battery cover. Remove exhausted batteries.
3. Place new batteries in compartment as shown (Fig. 3).
4. Replace the battery cover and tighten screws.

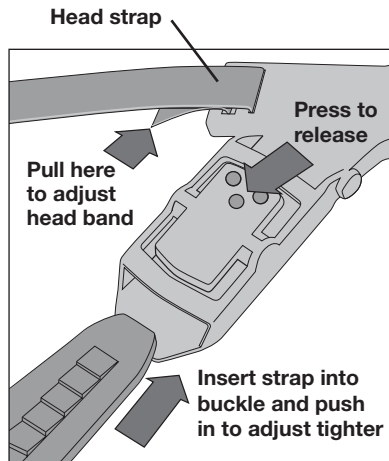
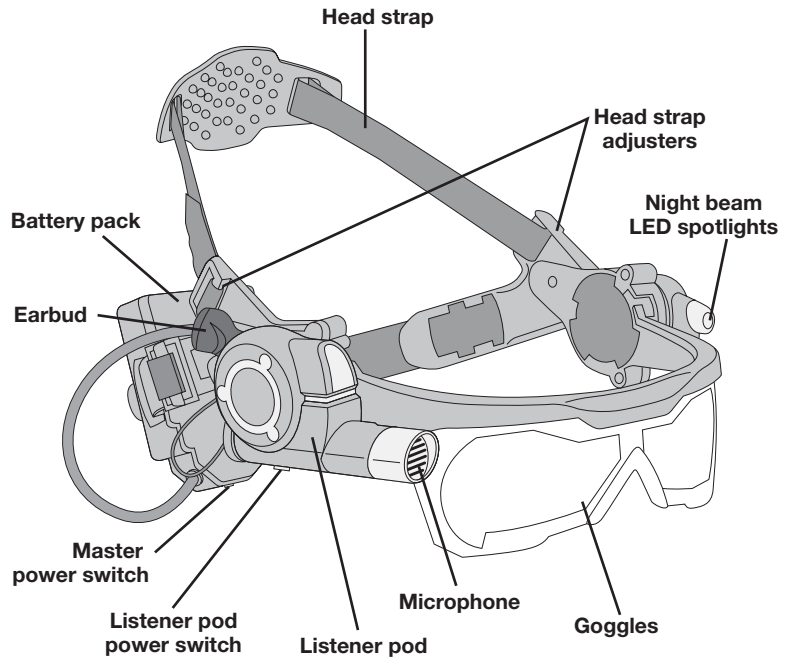


Fig. 1

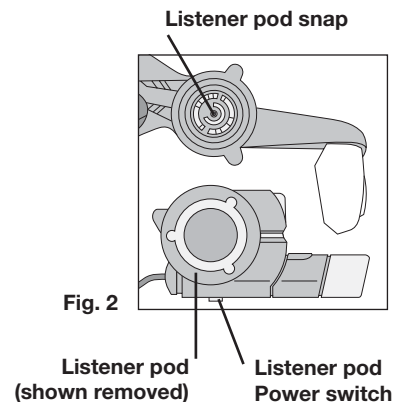


Fig. 2

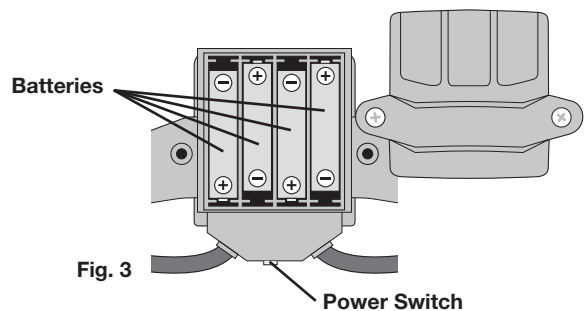


Fig. 3